



РОСАТОМ

ГОСУДАРСТВЕННАЯ КОРПОРАЦИЯ ПО АТОМНОЙ ЭНЕРГИИ «РОСАТОМ»

Management Model of the Final Stage of the Nuclear Facility Life Cycle

Oleg Kryukov,
Director for the State Policy in the Field of Radioactive Waste, Spent
Nuclear Fuel and Nuclear Decommissioning
State Atomic Energy Corporation “Rosatom”

ATOMEXPO-2014, June 10, 2014

Round Table

”The Back-End of the Nuclear Fuel Cycle.
New Technologies”

In 2013 the functions of state policy implementation and business were separated

Back-end development strategy



In the field of public functions



In the field of business

Director for the State Policy in the Field of RW, SNF and Nuclear Decommissioning

- Federal Target Programs Office
- RW Management Project Office
- SNF Management Project Office
- Nuclear Decommissioning Office
- International Programs Unit

- FSUE "National Operator of RW"
(construction of final disposal facilities)

JSC FCNRS – managing company

Enterprises:

- FSUE "MCC";
- FSUE "RosRAO";
- FSUE "Radon";
- JSC "Radium Institute";
- JSC "PDC UGR".

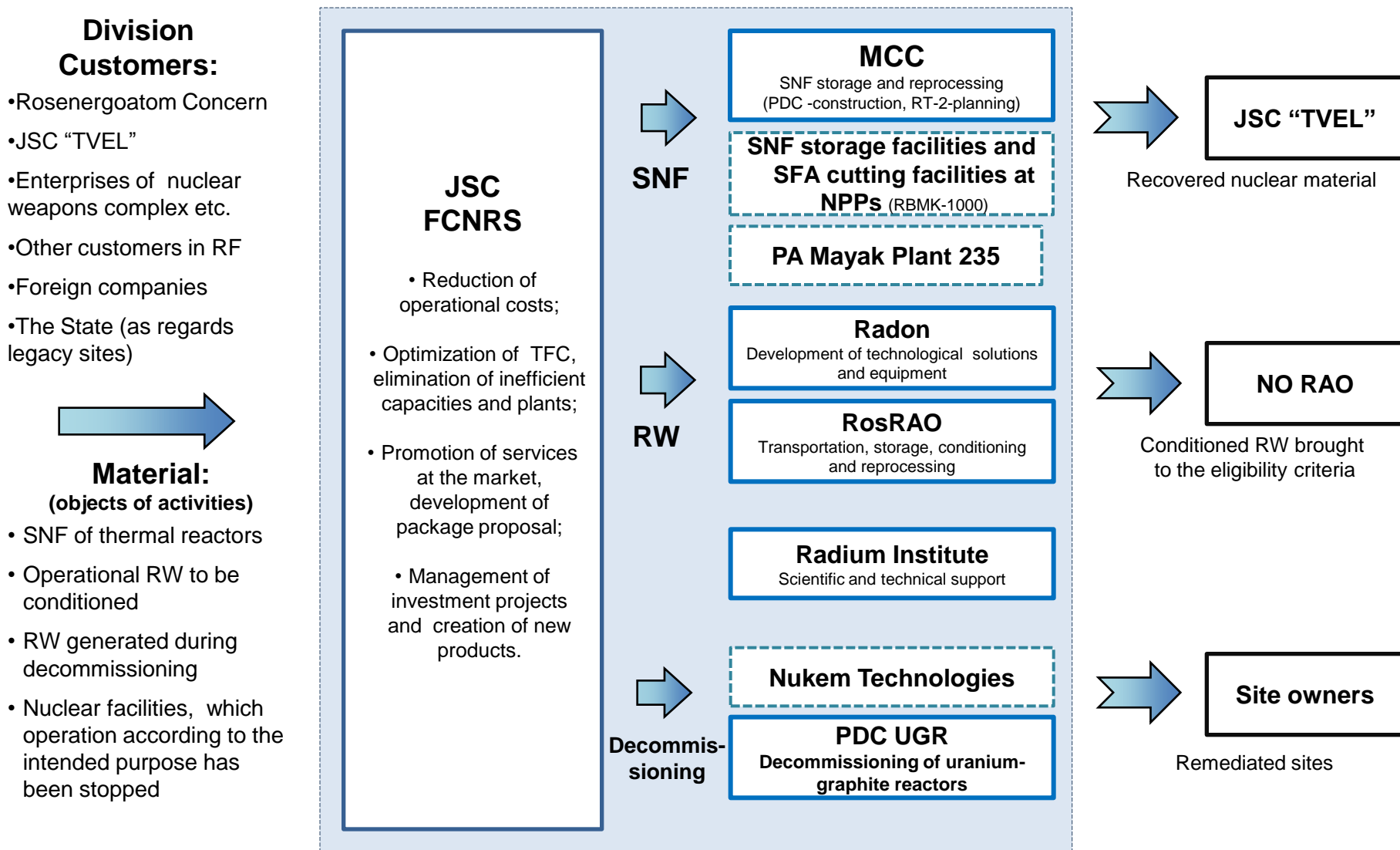
Structure

Objectives

- Shaping of back-end development strategy
- Formation of legislative basis, development of regulatory acts
- Approval of local strategies of enterprises in the field of RW
- Development and implementation of the long-term program on nuclear legacy
- NRS FTP formation and management
- International programs implementation
- Public acceptance-related activities

- Enhancing enterprise efficiency and developing technologies to reduce the cost of services in the back-end of the fuel cycle
- Creating large-scale production capacities so that the volume of reprocessed SNF and RW exceeded the volume of newly generated SNF and RW
- Offering competitive quality and price of products and services in the sphere of SNF, RW and decommissioning
- Increasing commercial revenue given the expansion in the international market

Back-End Division – a nationwide industrial and technological cluster. Division strategy is implemented by enterprises – centers of competence



SNF management

Development of technologies and products

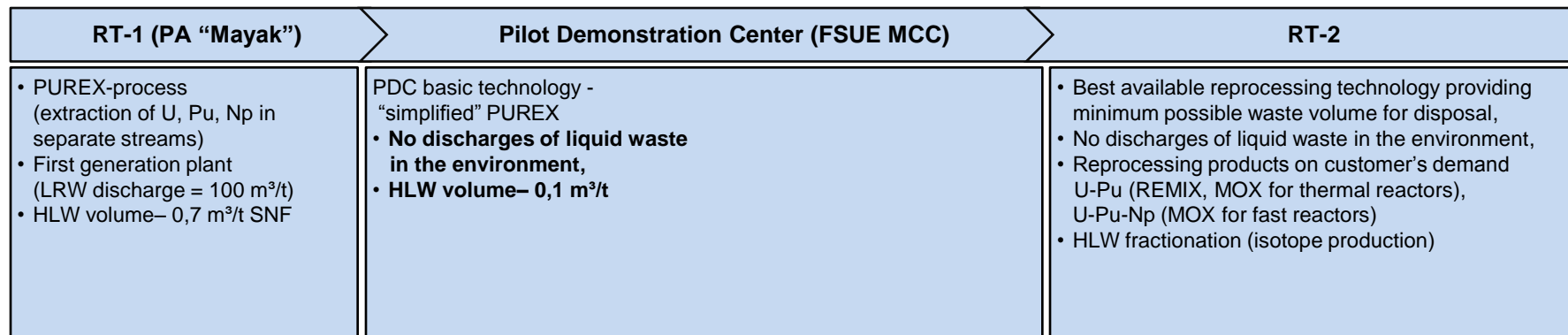


1. Technologies:

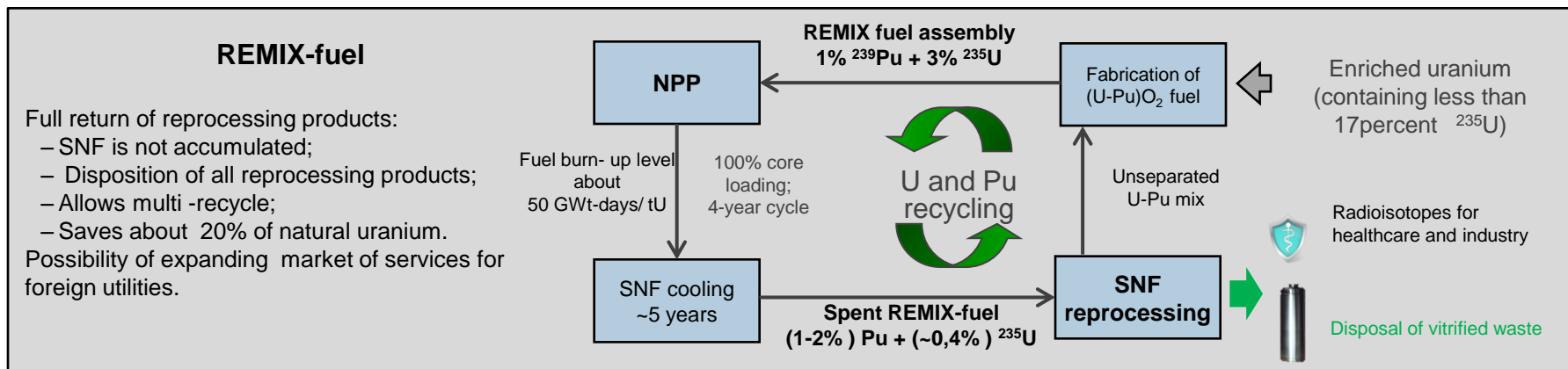
• Long-term storage:



• Reprocessing:



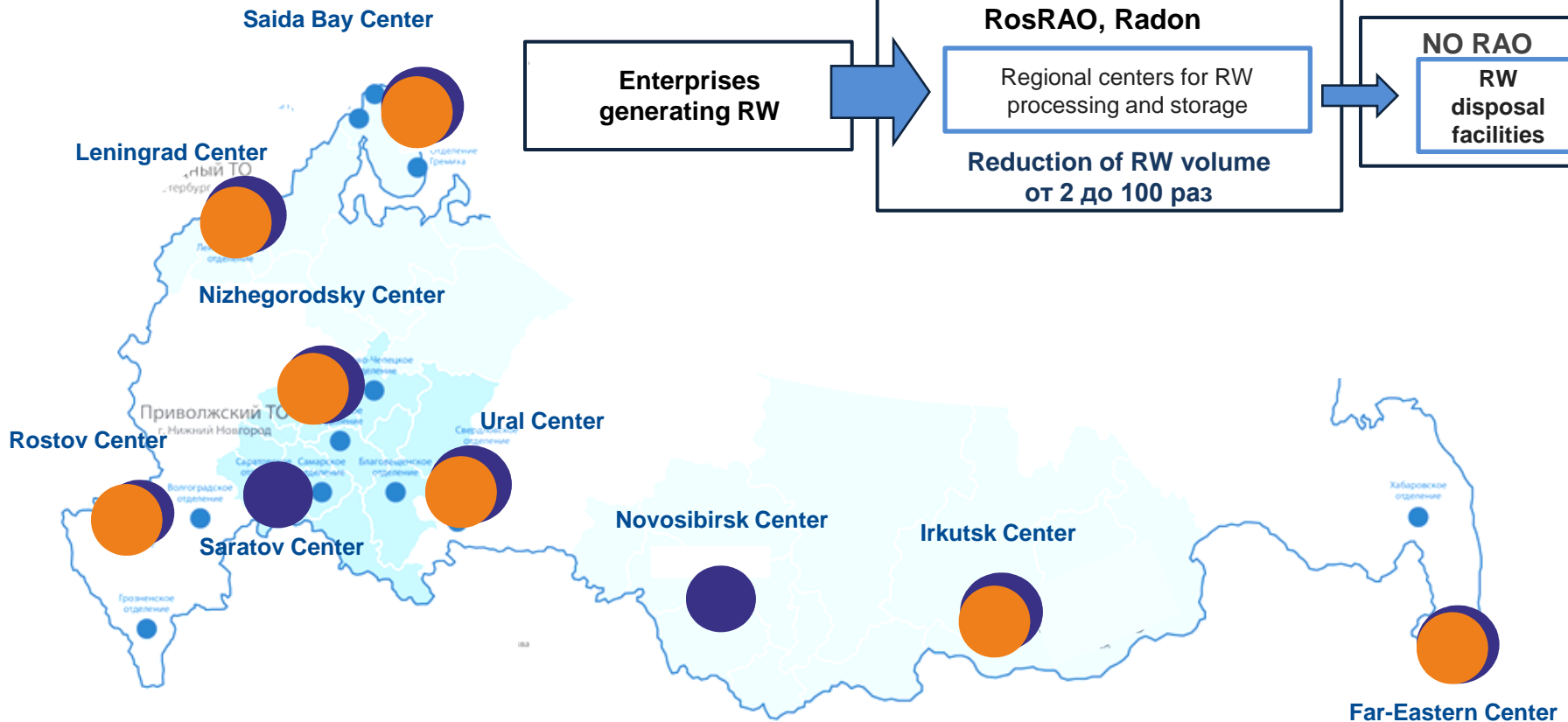
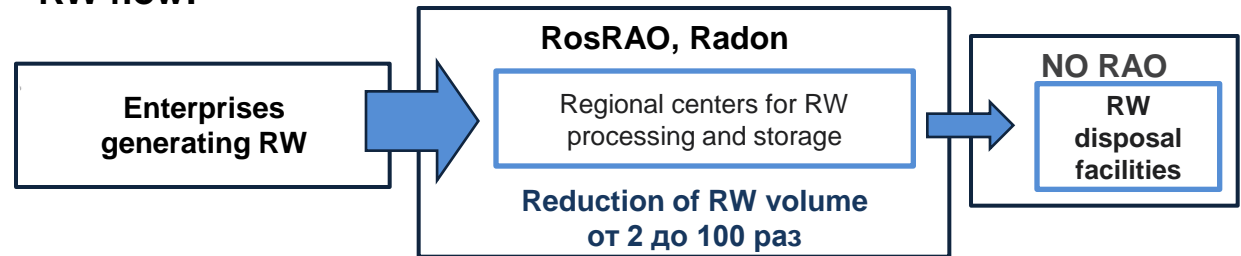
2. Products:



Strategic goals of the Division

- To ensure that RW processing volume exceeds RW generation volume by 2020;
- To create infrastructure basing on the existing RW management facilities of ROSATOM;
- To reduce costs of storage and treatment per 1 cubic meter of RW.

RW flow:

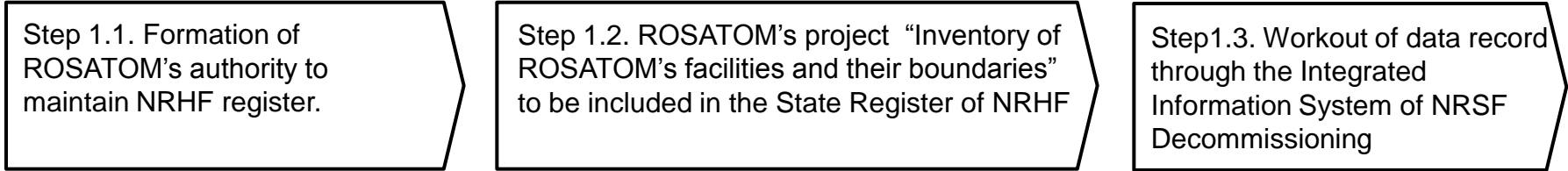


Decommissioning of nuclear and radiation hazardous facilities (NRHF). Stages of development of the long-term program to solve nuclear legacy problems



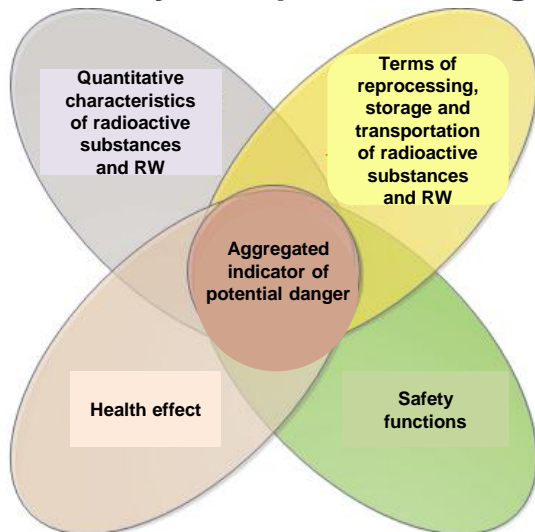
POCATOM

1. Forming a list (register) of nuclear and radiation hazardous facilities to be decommissioned

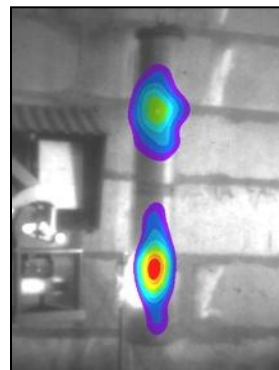


- Project on NRHF State Register maintenance
- Working with Enterprises in order to complete NRHF State Register database
- Automation of NRHF State Register maintenance process

2. Ranging of decommissioning objects by their potential danger



Using gamma-ray visors to reduce decommissioning costs



3. Development of the long-term program to address legacy problems (in terms of decommissioning)

